

T-REX

Billet Grilles

21051

**07-08 CHEVY
TAHOE**

21051

**07-08 CHEVY
TAHOE**

2007-08 CHEVY TAHOE BILLET INSERT & OVERLAY

Recommended Tools:

Phillips Screwdriver
10mm Socket & Ratchet
5/16" Wrench
Die Grinder or Jigsaw (optional)

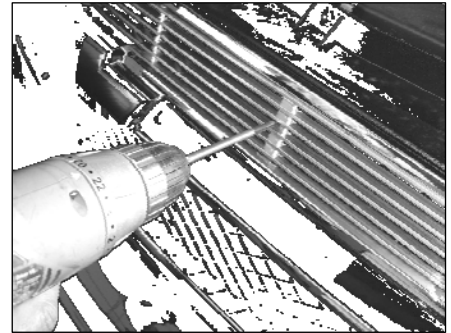
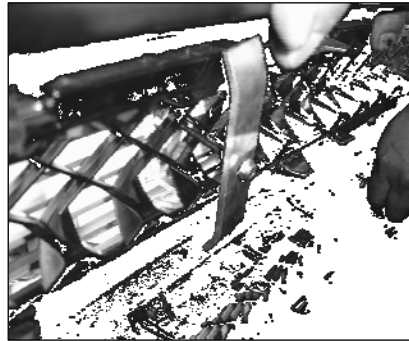
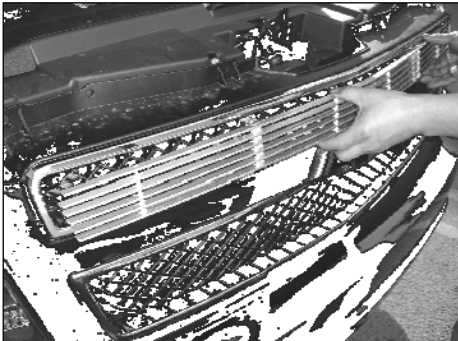
Parts List / Hardware:

1	Upper Billet Insert	2	4.5" X 3/4" Flange Brackets
1	Lower Billet Insert	2	6" X 3/4" Flange Brackets
4	6-32 x 2 Machine Screws		
4	6-32 Nylon Lock Nuts		

Read and understand instructions before attempting installation

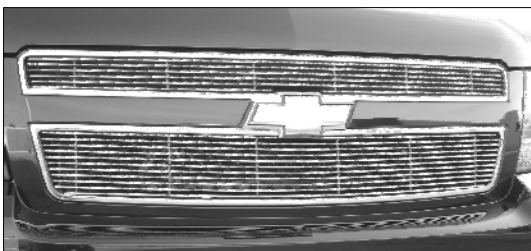
Step 1

Test fit the grilles into the openings. Remove the six 10mm bolts along the top of the grille. *If installing as an overlay; skip to Step 3.* Pull the grille assembly forward and remove the hardware retaining the bowtie. The grilles have molded clips that are part of the black plastic and an external clip on each end of the grille. Unclip the upper factory grille from the bumper cover; a screwdriver will help release the clips along the bottom of the grille. Remove the upper grille and repeat the process on the lower grille.



Step 2

Apply masking tape to the face of the grilles to prevent scratching. Use a die grinder or jigsaw to cut the inner mesh from the grille openings. Make your cuts at the base of the mesh; leave a 3/16" border around the openings for the grille stops (welded tabs in back of the billets) to rest.



Step 3

Center the grilles in place. Install the screws from the front and secure the billet with the flange brackets and nuts. The longer flanges are used on the bottom. Do not over-tighten the hardware. If the grilles were removed for insert style installation; re-install the grilles and retaining clips. Align the grille assembly into the core support and fasten the bolts. *Thank you for purchasing a T-Rex Billet Grille. 1/20/06*