

**44051 / 46051**  
**07-13 CHEVY**  
**TAHOE**



**44051 / 46051**  
**07-13 CHEVY**  
**TAHOE**

**SPORT SERIES GRILLE**  
**2007-13 TAHOE, SUBURBAN, AVALANCHE**

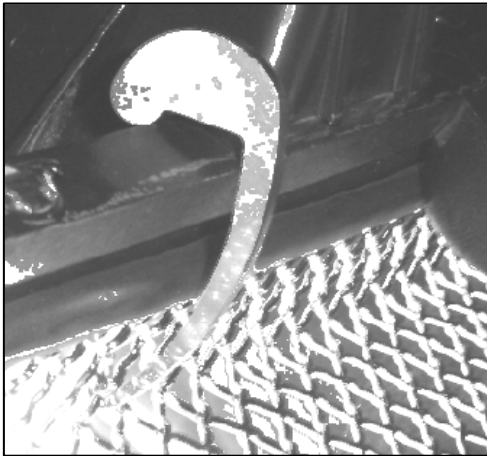
**Recommended Tools:**  
Slotted Screwdriver/Pliers

**Parts List / Hardware:**  
2 Sport Series Inserts (Top and Bottom)  
16 Custom Snap Brackets

**Read and understand instructions before attempting installation**

**Step 1**

Open the hood. Remove (6) plastic clips to remove upper shroud. Remove (4) 10 mm screws and (2) 12 mm screws to allow access to the back of the stock grill.



**Step 2**

Insert the lower grille insert. Tilt the top of the insert towards the vehicle to clear the bowtie in the center. Install the snap brackets to the mesh using the smaller ends of the brackets. The larger end will snap to the factory grille plastics (1). Make sure that the grille is not snapped in too tight as the grille will warp. Also, make sure that the clips are evenly spaced to secure the grille to the shell and not warp. Repeat this on the upper grille.

***Thank you for purchasing your T-Rex billet grille. 9/19/08***