



AIRCHARGER®

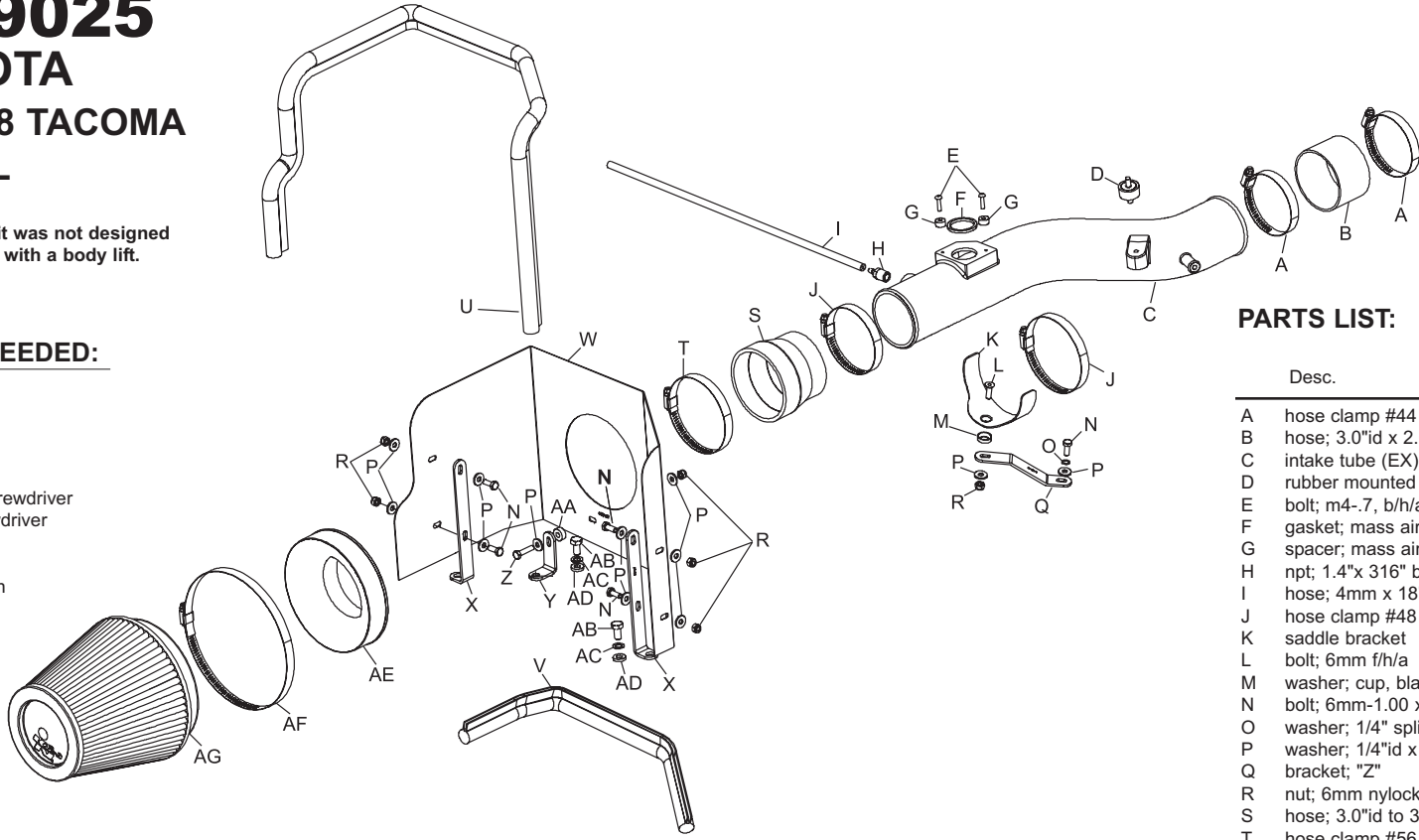
INSTALLATION INSTRUCTIONS

63-9025
TOYOTA
2005-08 TACOMA
V6-4.0L

NOTE: This kit was not designed to fit vehicles with a body lift.

TOOLS NEEDED:

Ratchet
 Extension
 10mm Socket
 12mm Socket
 13mm Socket
 Flat Blade Screwdriver
 Phillips Screwdriver
 2.5mm Allen
 4mm Allen
 10mm Wrench
 9/16" Wrench



PARTS LIST:

Desc.	Qty.	Part #
A	2	08560
B	1	08622
C	1	087167
D	1	07027
E	2	07793
F	1	09013
G	2	06531
H	1	080021
I	1	08153
J	2	08601
K	1	078855
L	1	08376
M	1	08180
N	5	07703
O	1	08198
P	12	08275
Q	1	010099
R	6	07553
S	1	08724
T	1	08620
U	1	102485
V	1	102469
W	1	074039
X	2	07159
Y	1	070812
Z	1	07704
AA	1	06555
AB	2	07844
AC	2	08239
AD	2	08276
AE	1	21512
AF	1	08697
AG	1	RF-1042

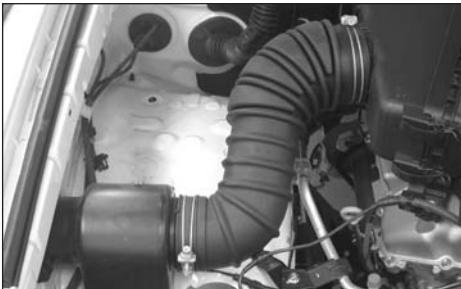
NOTE: FAILURE TO FOLLOW INSTALLATION INSTRUCTIONS AND NOT USING THE PROVIDED HARDWARE MAY DAMAGE THE INTAKE TUBE, THROTTLE BODY, AND ENGINE.

TO START:

1. Turn the ignition OFF and disconnect the vehicle's negative battery cable.



2. Loosen the two nuts that secure the engine cover, then remove the engine cover



3. Loosen the hose clamps at the air box and resonator.



4. Pull wire harness clip up to release from intake tube.



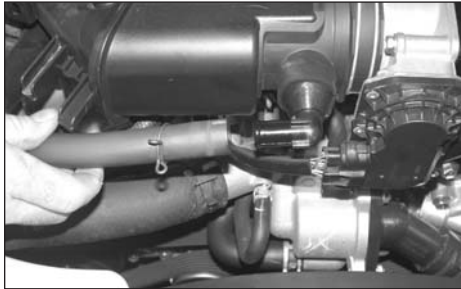
5. Remove intake tube from vehicle as shown.



6. Remove two bolts that secure resonator to inner fender, then remove resonator from vehicle as shown.



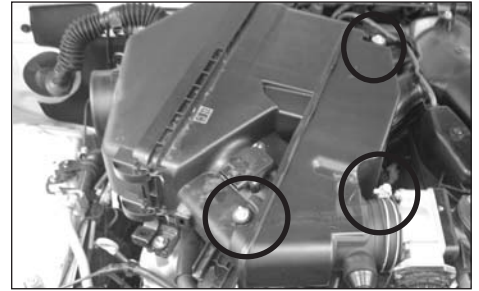
7. Disconnect the two mass air wire harnesses retaining clips from air box, then disconnect the mass air sensor electrical connection.



8. Remove crank case vent hose from air box as shown.



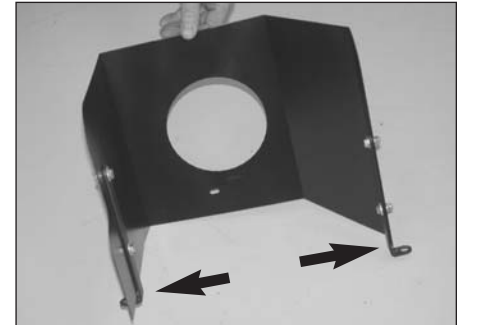
9. Remove fuel pressure regulator hose from back side of air box.



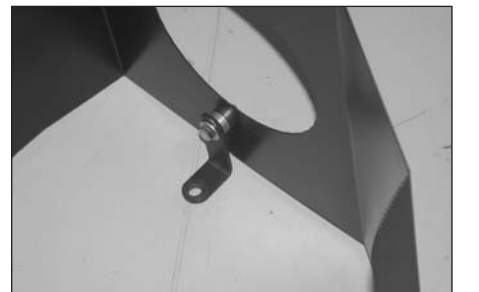
10. Loosen the hose clamp at throttle body, then remove the two bolts that secure air box to engine.



11. Remove air box assembly from engine as shown.



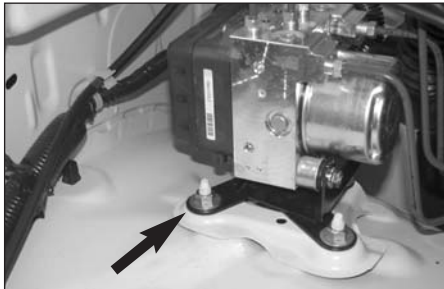
12. Install the two heat shield brackets (07159) onto the heat shield as shown with the provided hardware.



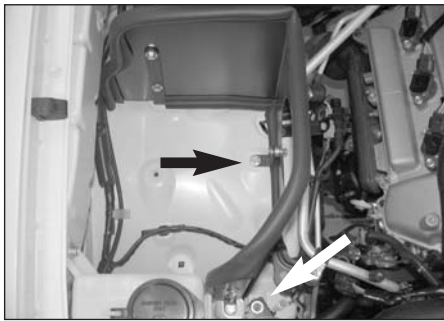
13. Install the small heat shield mounting bracket (070812) with provided spacer onto the heat shield as shown.



14. Install the provided edge trim onto the heat shield as shown.



15. Remove the ABS pump mounting nut shown. **NOTE:** This nut will be reused.



16. Install the heat shield onto the vehicle and secure with the provided hardware and the nut removed in step #15.



17. Remove the factory crank case vent hose from the valve cover, reverse the hose and reconnect onto the valve cover as shown.



18. Assemble the saddle clamp onto the tube-mounting bracket (010099) as shown with the provided hardware.



19. Install the tube mounting bracket assembly onto the valve cover with the provided hardware as shown.



20. Install the silicone hose (08622) onto the throttle body with the provided hose clamps as shown.



21. Remove the two screws that secure the mass air sensor to the air box assembly, then remove the mass air sensor as shown.



22. Apply the gasket to the mass air sensor, sticky side down as shown.



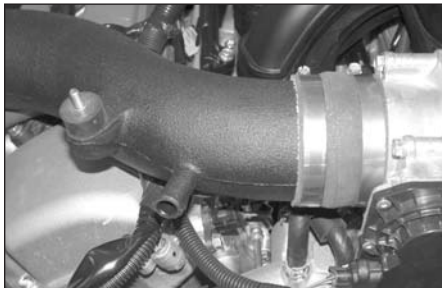
23. Secure the mass air sensor to the K&N intake tube using the provided screws and spacers as shown.



24. Install the vent fitting onto the K&N intake tube as shown.



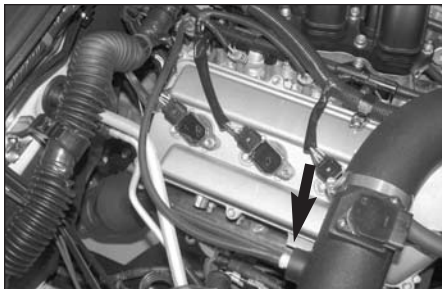
25. Install rubber mounted stud onto K&N intake tube as shown.



26. Install the K&N intake tube onto the throttle body and align with the saddle bracket.



27. Secure the K&N intake tube to the saddle bracket with the provided hose clamps also tighten the hose clamp at the throttle body.



28. Remove the stock vacuum hose from fuel pressure regulator, then install provided silicone hose to fuel pressure regulator and then onto the K&N intake tube.



29. Install the original crank case vent hose onto the valve cover, then connect the crank case vent hose onto the K&N intake tube.



30. Install the radius filter adapter into the Air filter and secure with the provided hardware as shown.



31. Install the provided silicone hose (08724) onto the Air filter assembly and secure with the provided hose clamp as shown.



32. Install the K&N Air filter onto the intake tube as shown.



33. Reconnect the mass air sensor electrical connections.



34. Re-install engine cover then secure with the nuts that were removed in step #2. Then reconnect the vehicle's negative battery cable. Double check to make sure everything is tight and properly positioned before starting the vehicle.

35. It will be necessary for all Aircharger's to be checked periodically for realignment, clearance and tightening of all connections. Failure to follow the above instructions or proper maintenance may void warranty.

ROAD TESTING:

1. Start the engine with the transmission in neutral or park, and the parking brake engaged. Listen for air leaks or odd noises. For air leaks secure hoses and connections. For odd noises, find cause and repair before proceeding. This kit will function identically to the factory system except for being louder and much more responsive.
2. Test drive the vehicle. Listen for odd noises or rattles and fix as necessary.
3. If road test is fine, you can now enjoy the added power and performance from your kit.
4. K&N suggests checking the Air filter element periodically for excessive dirt build-up. When the element becomes covered in dirt (or once a year), service it according to the instructions on the Recharger service kit, part number 99-5050 or 99-5000.