

2008 Toyota Landcruiser

Set Part # 30913

Rev-1 09-23-08



Step 1:

Prior to Installation:

- A) **Fit:** Verify the fit of the flares to vehicle. (Some filing, sanding, or cutting may be necessary to ensure proper fit).
- B) **Painting:** (Optional) if paint is desired it must be done prior to installing flares on the vehicle clean outer surface with a good grade degreaser. **DO NOT USE LACQUER THINNER OR ENAMEL REDUCER AS A DEGREASER.** Wipe outer surface thoroughly with a tack rag prior to paint.
Paint flares using a high quality enamel, or polyurethane automotive paint. (Application of a primer coat is optional)
If painting edge trim (not recommended), use a flex additive.
- C) **Performance:** Using larger Tires may increase the area required to turn the vehicle. Some Tire/Rim combinations may require lowering bump stops and or installing steering stops to prevent tire from contacting flare.
- D) **Exhaust System:** Modifications may be necessary to maintain a minimum 4" clearance between flares and exhaust pipes.
(Exhaust gases should not vent directly onto flares)
- E) **Metal Protection:** All exposed fasteners and bare metal should be treated with red oxide primer BEFORE installing flares. Spray inner fender wells with undercoating AFTER flare attachments have been completed.
- F) **Factory Part Removal:** Removal of factory running board may be necessary. Torque factory running board to 14 ft-lbs.

TOOLS FOR EASY INSTALLATION

- Socket Wrench
- 10mm Socket
- #2 Phillips Screwdriver
- T30 Torx Bit
- Trim Tool or Flathead Screwdriver

KIT COMPONENTS:

- 1 Set of Fender Flares
- 394" Edge Trim
- 8 "S" Clips
- 12 Black Tabs
- 8 Serrated-Flange Screws
- 4 Plastic Tufloks
- 20 Hex Bolts
- 2 Plastic Clips
- 2 "U" Clips
- 2 Tape Blocks
- 2 Plastic Brackets

FLARE INSTALLATION PROCEDURES

Step 2: Edge Trim Installation (See Illustration #1)

- A) Peel two to three inches of red vinyl backing away from edge trim tape. Applying the adhesive side of the edge trim to the inner side of the flare, affix the edge trim to the top edge of the flare (the portion that comes in contact with the vehicle). **See Illustration #1**
- B) Press edge trim into place along the top edge of the flare in one-foot increments, pulling red vinyl backing free as you continue to work your way around the top edge of the flare.

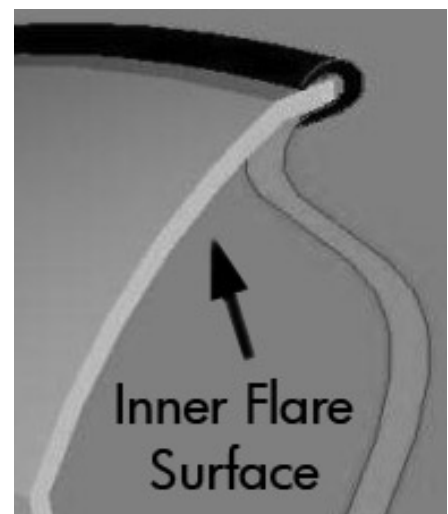


Illustration #1

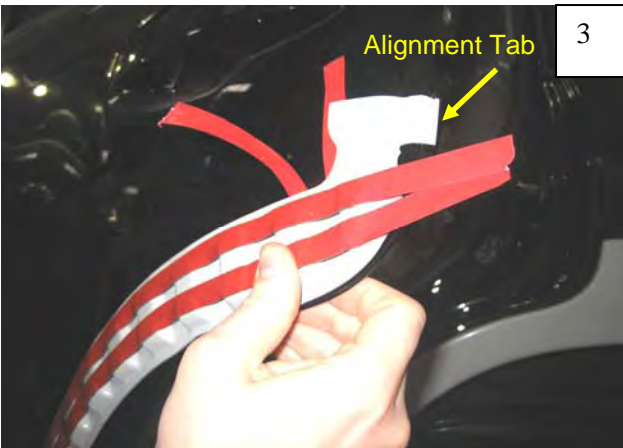
Step 3: Install Rear Door Piece (See Photos #1 through #6)



Make sure that all installation surfaces are free of dirt and/or grease. Use a clean, lint-free cloth and isopropyl alcohol-based cleaner.



Fold tape liner tabs on located inside the Inner Door Piece. (contacting vehicle surface, (both ends). NOTE: Make sure tabs are folded toward the outside of the part and that the bottom tape liner is in front of top liner. Do not peel liner from tape.



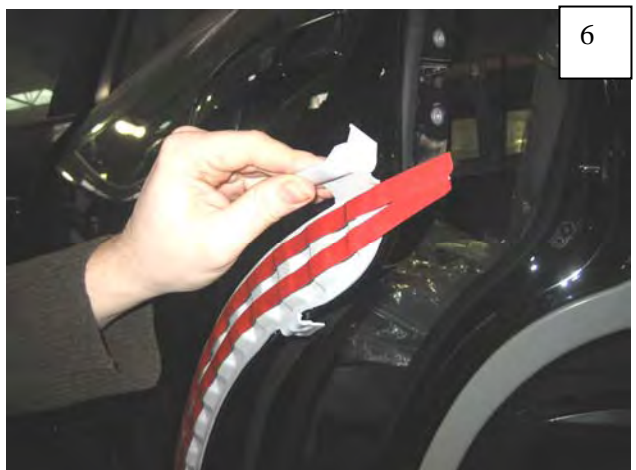
Hold the part at an angle to prevent tape from prematurely sticking, and align the part on the door by aligning three break-away tabs on part with edges of door.



Confirm placement of the Inner Door Piece. Maintaining part placement, stick peeled end to door and begin pulling tab nearest the front of the vehicle (bottom tape). Continue pulling frontward tab while applying pressure to part. Repeat process for remaining liner.

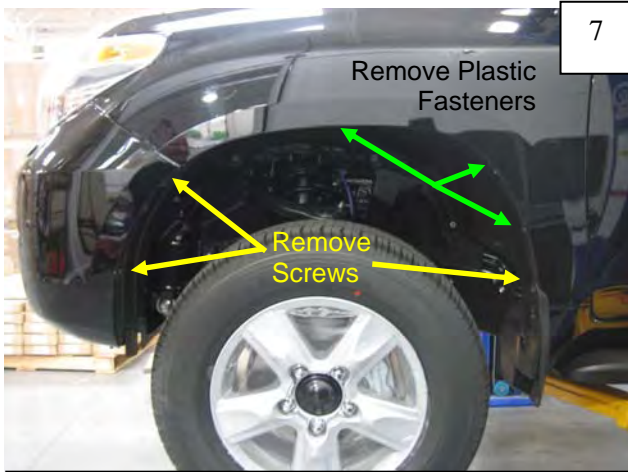


Press the part into place. Apply 30 PSI to the taped areas for a minimum of 15 seconds for proper bond. The tape reaches maximum adhesive bond after 24 hours of contact.



Break all three alignment tabs once part has been pressed into place. Failure to do so may result in damage to the vehicle. **Wait at least 30 minutes before continuing Rear Door Piece installation in Step 6.**

Step 4: Front Flare Installation (See Photos #7 through #16)



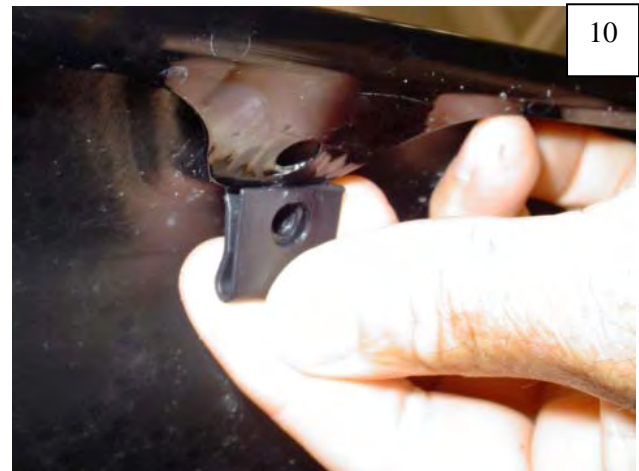
Using a socket with a T30 Torx bit, remove three factory screws. Use a trim tool or flat head screwdriver to remove three factory plastic fasteners located in rear of wheel well. Discard.



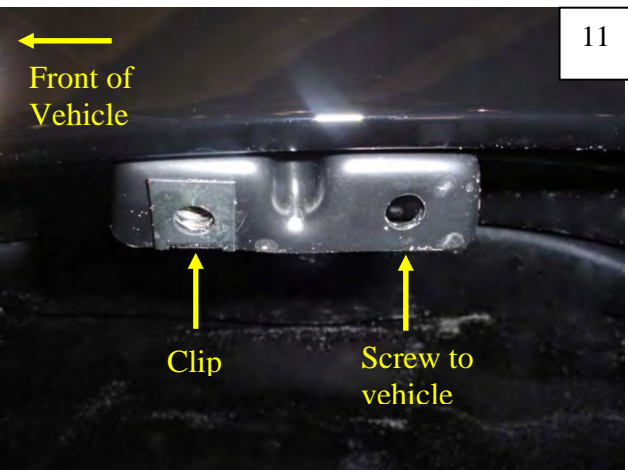
Using a 10mm socket, remove one factory bolt located at front underside of bumper. Discard.



Install plastic clip onto factory sheet metal below the inner splash shield.



The splash shield needs to be pushed behind metal fastening point to access where the clip needs to be installed.



Install supplied plastic bracket using large Hex Screw into the plastic clip installed in step 10. The screw goes in rearward hole and the clip fastens over the forward hole. Brackets are marked "L" for left side and "R" for right side.

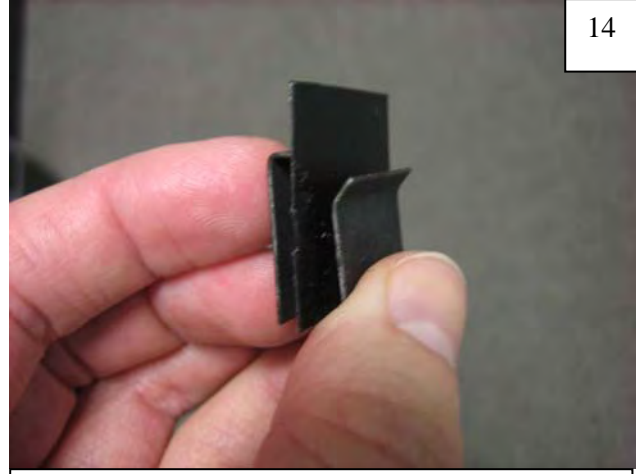


Reposition Front Flare on Fender. Hand start five supplied Hex Screws through flare and into hole locations shown (three in wheel well, one at front underside of bumper, and one through the "U" Clip installed on bracket in Step 11). Do not tighten.



13

Install two supplied Plastic Tuf-Loks through rearward holes in Flare.



14

Peel paper backing from supplied Black Tab. Adhere tab to supplied "S" Clip.



15

Slide "S" Clip/Black Tab combination onto sheet metal lip near rocker panel, at rear bottom of flare, aligning hole in clip with hole in flare.



16

Start a supplied Serrated-Flange screw through lower rear hole in flare and into "S" Clip installed in Step 15. Tighten all screws.

Step 5: Rear Main Flare Installation (See Photos #17 through #26)



Using a socket with a T30 Torx bit, remove three factory screws. Discard.



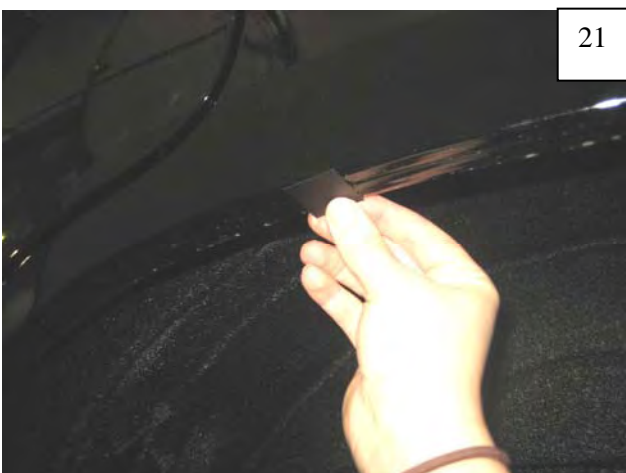
Using a 10mm socket, remove one factory bolt from underside of bumper at mud flap area. Discard.



Position Rear Main Flare on fender, and hand start three supplied Hex Screws in rear of rear wheel well, starting with the top screw and working your way down.



Using a grease pencil, mark four clip locations on fender of flare, using holes in flare as a guide. Remove screws and remove flare from fender.



Peel paper backing from supplied Black Tab. Center four tabs over marks made in Step 20.



Tab Locations.



23

Position four "S" Clips onto fender lip over Black Tabs.



24

Reposition Rear Main Flare on fender. Hand start four supplied Hex Screws through flare and into hole locations shown (three in wheel well, one at rear underside of bumper). Do not tighten. Make sure that tape tab at front of flare is accessible.



25

While holding bottom front edge of flare in place, pull the tape tab. Press part into place, applying 30 PSI for a minimum of 15 seconds for proper bond. Once tape adheres, parts should not be adjusted in this area.



26

Start four supplied Serrated-Flange Screws through forward holes in flare and into "S" Clips installed in Step 23, starting with topmost hole and working your way down. Once last screw is started, tighten all screws

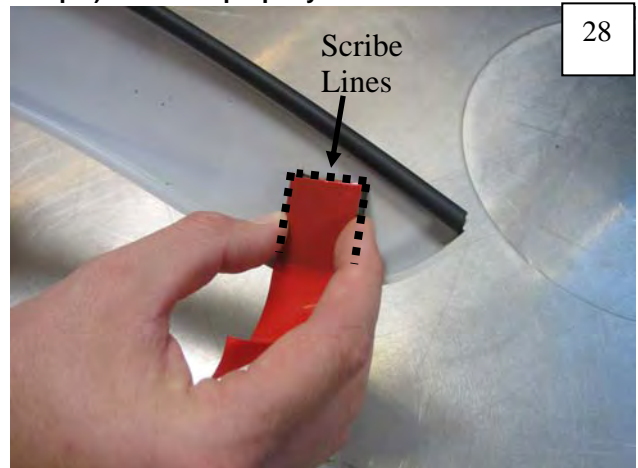
Step 6: Rear Door Piece Installation Continued (See Photos #27 through #31)

NOTE: Be sure to wait 30 minutes between installing inner door piece and outer door piece in order to allow for adequate time for inner door piece (installed in Step 3) to adhere properly to vehicle



27

Fold tape liner tabs on located inside the Inner Door Piece (contacting Outer Door Piece, both ends). NOTE: Make sure tabs are folded toward the outside of the part and that the bottom tape liner is in front of top liner. Do not peel liner from tape.



28

Place block in the scribe lines at the lower rearward edge of the Outer Door Piece.



29

Position Outer Door Piece over Inner Door Piece. Maintaining part placement, begin pulling tab nearest the front of the vehicle. Continue pulling frontward tab while applying pressure to part. Repeat process for remaining liner.



30

Remove the bottom tape tab from the block piece.



31

Press the part into place. Apply 30 PSI to the taped areas for a minimum of 15 seconds for proper bond. The tape reaches maximum adhesive bond after 24 hours of contact.