

Intake Kit Installation Instructions: Cherokee



P.O. Box 1719
 Corona, CA 92878
 Support: 877-512-8111
 www.aFeFilters.com

Kit Part #	54-10422
Make:	Jeep®
Model:	Cherokee (XJ)
Engine:	L6-4.0L
Year:	1991-2001
Note:	Intake kit will not work with throttle body spacer or ABS brake system

Tools Required	5/16" socket or wrench
	10mm socket or wrench
	13mm socket or wrench
	Ratchet and extension
	Med flat screwdriver

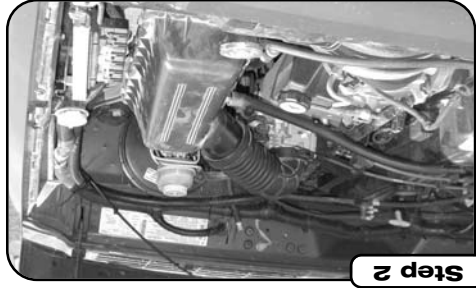
Part List:	1 Air filter 24-40035 (Replacement filter)
	1 Housing, filter
	1 Intake tube
	1 Coupler, straight, 2.75" x 1.75"
	1 Screw, 1/4-20" X 3/4" Hex Head
	2 Clamps, # 048
	1 Nut, hex, 1/4-20"
	2 Washer, fender, 1/4" x 7/8"

	1 Washer, Split Lock, 1/4"
	1 Trim Seal, 26.5"
	1 Trim Seal, Tube Opening, 13.5"
	1 Pad, isolation
	1 Hose 1/2"x3"L
	2 Hose 1/2"x16"L
	2 Elbow 1/2"



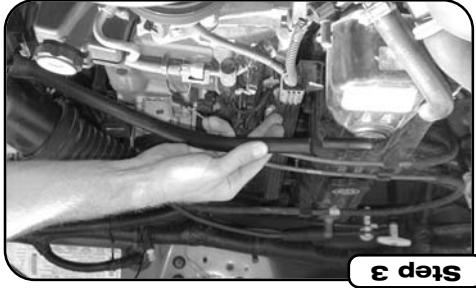
Step 1

Complete kit with parts.



Step 2

Complete stock intake.



Step 3

Remove breather tube from valve cover vent.



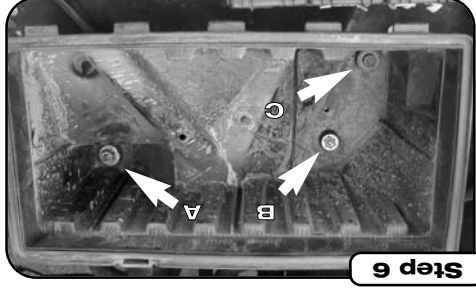
Step 4

Remove top of OE air box.



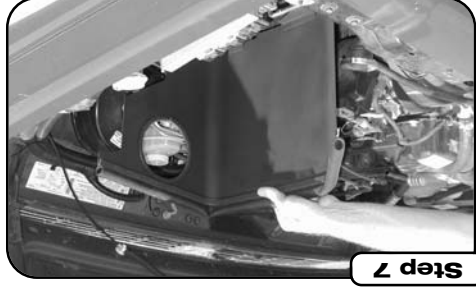
Step 5

Loosen clamp at throttle body and remove.



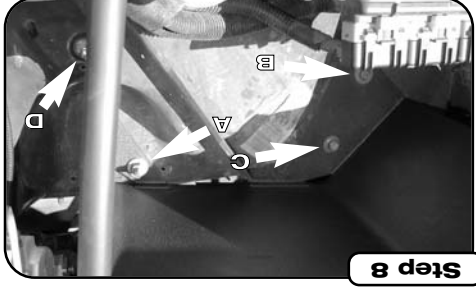
Step 6

Remove one nut (A) and two bolts (B & C) and lift bottom of air box.



Step 7

Prior to installing intake housing apply trim seal as shown to housing. Long piece to top edge and short piece lines hole.



Step 8

Install three bolts (A, B & C) and one nut. Reuse screws C and B reuse nut at A. Used supplied screw washer and nut at location "D".



Step 9

Looking straight at brake booster place center of isolation pad at 1 o'clock.



Step 10

Attach coupler to intake at throttle body end. Then slide intake tube through filter housing starting with filter end of tube.



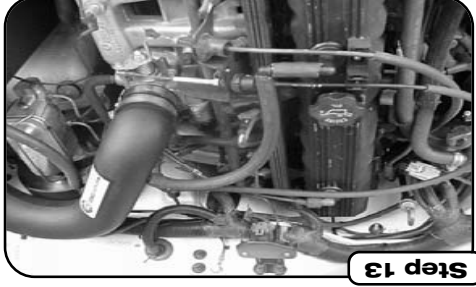
Step 11

Slip coupler over throttle body.



Step 12

Install intake tube onto throttle body making sure tube is completely resting on throttle body to ensure proper hood clearance. Tighten clamps to secure tube.



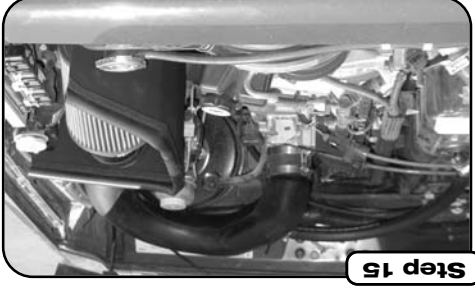
Step 13

Connect supplied vent hose to nipple at intake tube. Use elbow and short hose at rocker cover.



Step 14

Install filter to intake tube and tighten clamp. Do not use oil or grease. Attach vent hose and elbow if necessary.



Step 15

Make sure all hoses and clamps are tight and that all electrical components are secure. Re-check after a few hours of operation.

Note: Filter Cleaning and Re-oiling: When cleaning your aFe filter, be sure to use only aFe's "Restore Kit" (aFe P/N: 90-15002 red oil aerosol, or aFe P/N: 90-50502 red squeeze bottle oil)